

## COVE BASE INSTALLATION INSTRUCTIONS

---

### NOTICE TO INSTALLER

Our warranty will become effective only if these instructions are followed in every respect.

**Please note:** In all cases, installations should comply with procedures outlined in ASTM Standards for installation, at a minimum. For procedures specific to Shaw products, please refer to the instructions below.

**Read the complete instructions before beginning the installation.**

### GENERAL

The wall surface must be thoroughly dry, smooth, and free from dirt, wallpaper, vinyl wall covering, grease, old adhesives, and other extraneous material. **DO NOT** apply directly over outside walls in contact with earth (such as unfurred basement walls) or over ceramic tile, metals, or other impervious surfaces because poor adhesion may result.

Maintain the wall base, adhesive, and room air at a uniform temperature of at least 70°F for 24 hours prior to, during, and 48 hours after the installation. Rolled wall base should be unrolled and allowed to lie flat for 24 hours prior to the installation to regain its normal shape.

Use only Shaw Cove Base Adhesive carefully following the directions on the container label.

### INSTALLATION OF BASE

Spread the adhesive either on the back of the base or on the wall using a triangular notched trowel or cartridge gun. Trowel notches should be 3/32" deep by 3/32" wide with 3/32" flats. If applying adhesive with a cartridge gun, use a 2-hole nozzle for 2 1/2" base, a 3-hole nozzle for 4" base, and a 5-hole nozzle for 6" base.

Apply the adhesive at least 1/4" from top of base if using a trowel and 1" from top of base if using a cartridge so that adhesive **does not** seep out as the wall base is rolled.

Bond the wall base within 20 minutes of the adhesive application. Roll thoroughly with a hand roller immediately after applying the wall base to the wall (Figure 1). If roller is unavailable, wipe the wall base with a soft cloth, firmly pressing the base against the wall. Base applied to curved or irregular surfaces may require bracing until the adhesive sets.



If the wall or floor surface is uneven, it may be necessary to trim the edges before installing adjoining pieces of base. Use a razor-type utility knife, cutting the wall base from face to back.

Immediately remove excess adhesive from the base or the wall with water. Excess adhesive may leave a stain if not removed promptly.

Avoid exposure of base to excessive heat, such as from direct sunlight, until the adhesive has completely set.

## CORNERS

Outside and inside corners can be formed easily from standard 4-foot lengths or rolls.

### Outside Corners – Suggested Method

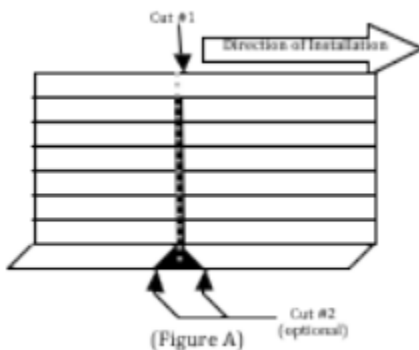
When you come to an outside corner, butt the next section of base to the last installed section (or continue to the corner when using coils). Make sure the base is in the proper position on the wall as you would install it.

1. Using a pen or pencil, mark the base of the base using the wall as a guide. This will give you the correct contour of the wall.



2. Fold the wall base at the line, face in, and shave the back of the wall base while folded (Figure 2), removing the line and approximately 1/8" of base material on either side of it. If you are using a topset gouge to make these cuts, turn the base face down and make your cut starting at the top and working down to the bottom (Cut #1). **Note:** Always gouge on the side of the line in the direction the base will be going.

**Important:** The depth of this area at its deepest point should not exceed 20% of the base thickness.



3. To ensure that the toe sits flush against the floor, the initial cut (Cut #1 – Figure A) can be widened on either side of the line (Cut #2 – Figure A) near the bottom of the base, though this cut is optional. Make the cut (gouge) downward, widening the initial cut to approximately one half inch at the bottom. This will ensure there is no pressure of the toe against the floor surface.

**Note:** The next two steps must be completed before continuing to Step 5.

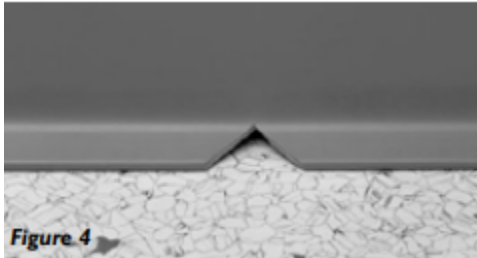
- Fold base with face out where corner will occur and roll with hand roller (Figure 3).



4. Pull up on the toe and turn it inside out. Position the base after applying adhesive and set into place allowing the toe to drop down to form a perfect corner.
5. Roll thoroughly or firmly press corner against wall.
6. Remove excess adhesive.

#### Inside Corners (Suggested Method)

1. Draw a line on the back of base where corner will occur.
2. Using a straight edge as a guide, lightly cut along line from top to bottom of base to a depth of approximately 20% of the base thickness.
3. Cut a small 90° triangular wedge (45° off center) to remove toe of cove base at line (Figure 4).



4. Fold base at mark with face in. While base is still warm apply adhesive and press base into corner. Carefully push the toe of cove base

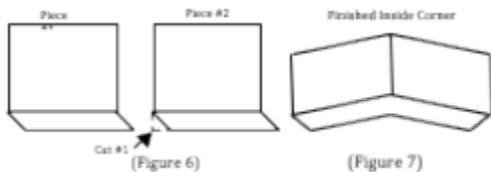


against the wall to close the triangle (Figure 5).

5. Properly roll base.
6. Cool by placing a wet cloth against corner. Wipe dry.
7. Remove excess adhesive.

#### Inside Corners (Optional Method)

1. When you come to an inside corner, use a scribe to mark the base using the corner as the pattern to get the exact curvature of the wall.
2. Cut the base to the exact length allowing a good, tight fit to the wall.
3. Apply the proper amount of adhesive and install this piece of base.
4. Using the same procedure as above, scribe and cut the second piece for the corner. (**DO NOT** install the second piece yet.)
5. After cutting the second piece of base, turn the piece front side down and make a back angle cut in the toe, starting at the top of the toe and cutting down to the bottom of the toe. (See Figure 6: Cut #1)



6. Check the fit with the previously installed piece.

7. Make any additional cuts to ensure a snug fit.
8. Apply adhesive and install (Figure 7).